

**KOBELCO**

# TELESCOPIC CLAMSHELL DIPPER

SK220XDLC SK380XDLC

**Max. Digging Depth**

21 m

29.4 m

**Bucket Capacity**

0.6 m<sup>3</sup>

1.3 m<sup>3</sup>

# DEEP SCOOP

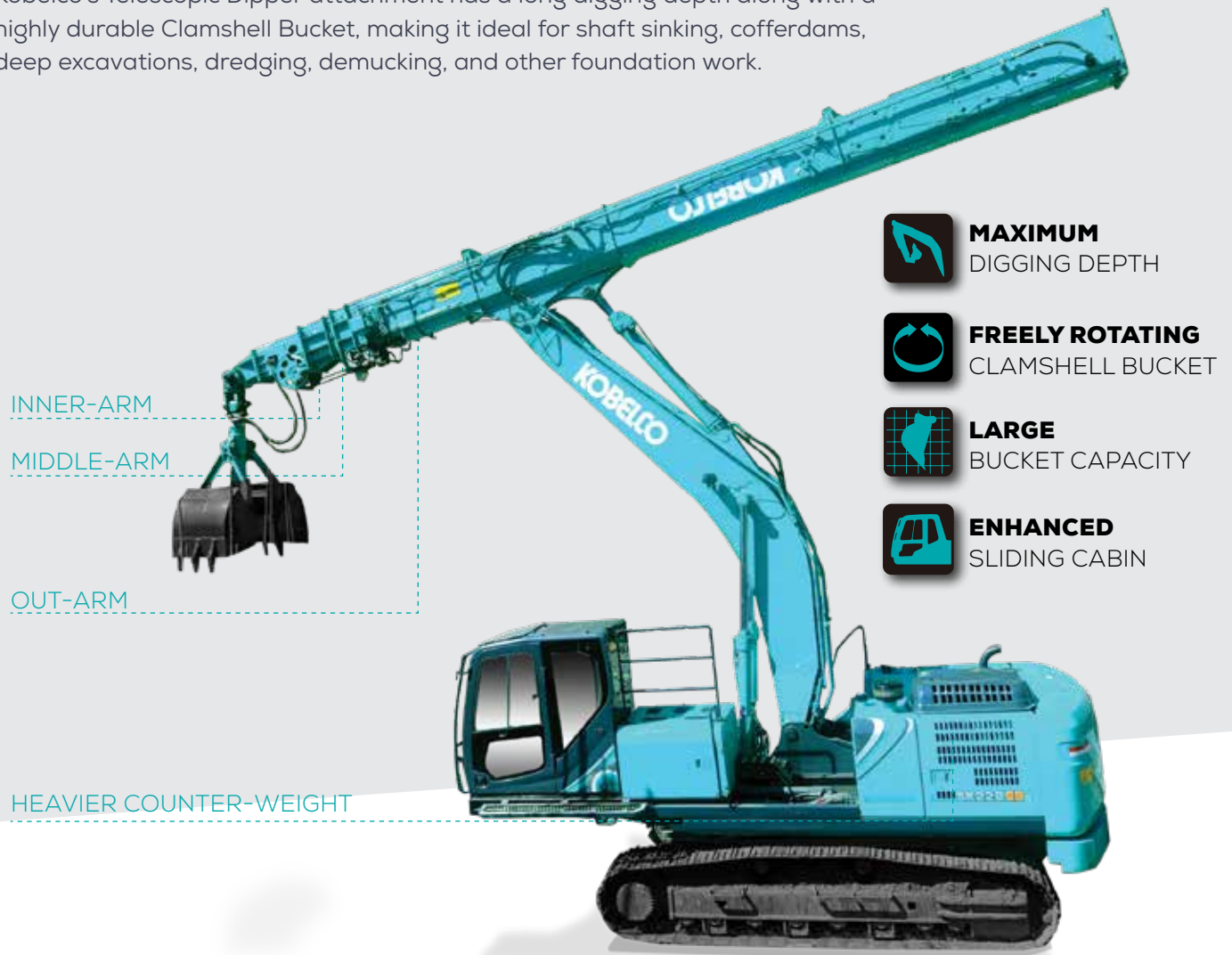
when you  
**need it the most**

**SK220 XD<sub>LC</sub> SK380 XD<sub>LC</sub>**



# TELESCOPIC CLAMSHELL DIPPER

Kobelco's Telescopic Dipper attachment has a long digging depth along with a highly durable Clamshell Bucket, making it ideal for shaft sinking, cofferdams, deep excavations, dredging, demucking, and other foundation work.



## APPLICATIONS

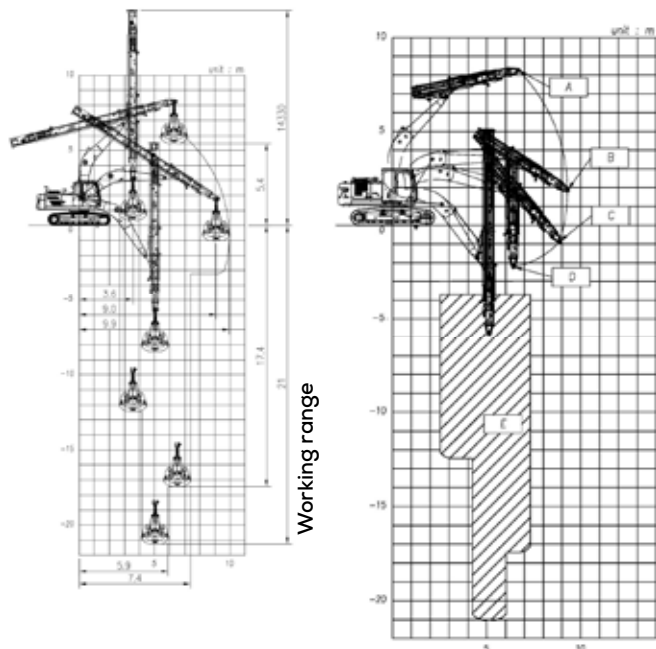
### TELESCOPIC DIPPER

- Lifting materials and resources from deep holes and trenches
- Demucking
- Metro construction applications
- Foundation work

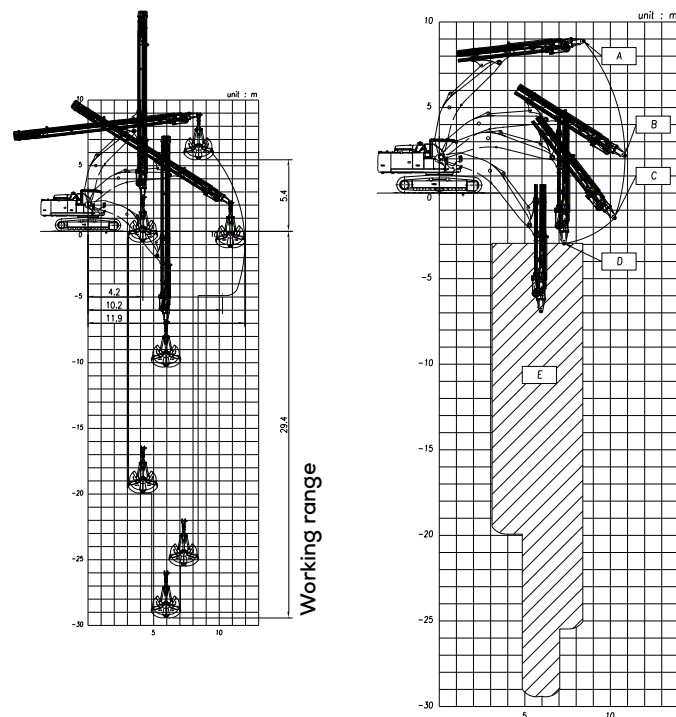
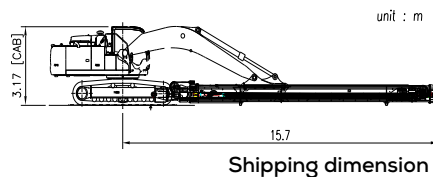
### CLAMSHELL BUCKET

- Digging pits for ground construction work
- Ideal for digging and loading material in tight and limited spaces
- Material handling, loading and unloading industrial wastes, grains, sands, etc
- Heavy-duty mechanical clamshell is ideal for dredging applications by crane

## STD20-69 (21m)



## STD35-99 (29.4m)



	SK220XDLC	SK380XDLC
<b>Std. Boom Length</b>	5.65 m	6.5 m
<b>Telescopic Dipper</b>	STD20-69	STD35-99
	4,350 kg	6,600 kg
<b>Clamshell Bucket</b>	0.6 m³	1.3 m³
	1,270 kg	2,000 kg
<b>Sliding Cabin</b>	2.3 m	2.3 m

Point	Load (kg)		Limit
	SK220XDLC	SK380XDLC	
<b>A</b>	6,090	6,610	Boom Cylinder Hydraulic (87%)
<b>B</b>	2,600	4,540	Tipping (75%)
<b>C</b>	2,480	4,070	
<b>D</b>	5,100	4,880	Telescopic Cylinder (87%)
<b>E</b>	5,100	4,880	

	STD20-69 SK220XDLC	STD35-99 SK380XDLC
Max. Digging Depth	21.0 m	29.4 m
Bucket Capacity	0.6 m³	1.3 m³
Tele' Extension	11 s	20 s
Digging	4.5 s	4 s
Tele' Retraction	9 s	19 s
Loading (Swing 90°+ BoomUp + Arm Dump)	7.5 s	7 s
Bucket Dump	4.5 s	4 s
Return to Dig (Swing 90°+ Boom Down + Arm Crowd)	5.5 s	5 s
Total Cycle Time	42 s	59 s

- Do not attempt to lift or hold any load that is greater than these lift capacities at their specified lift point radius and heights. Weight of all accessories must be deducted from the above lift capacities.
- Lift capacities are based on machine standing on level, firm, and uniform ground. User must make allowance for job conditions such as soft or uneven ground, out of level conditions, side loads, sudden stopping of loads, hazardous conditions, experience of personnel, etc.
- Operator should be fully acquainted with the Operator's and Maintenance Instructions before operating this machine. Rules for safe operation of equipment should be adhered to at all times.

Tele' Extension: 1-Pump Loading      \*Tele' Retraction: 2-Pump Loading



**SK220 XD<sub>LC</sub>**  
STD20-69 (21m)



**SK380 XD<sub>LC</sub>**  
STD35-99 (29.4m)



*Mumbai Metro*



*Coastal Road Project,  
Mumbai-Girgaon Marine Drive*

## **KOBELCO CONSTRUCTION EQUIPMENT INDIA PVT. LTD.**

**INDIA HEADQUARTERS** H-200, Sector 63, Noida, Uttar Pradesh 201 307

**FACTORY** 4100, Central Expressway, Sri City, Andhra Pradesh 517 646

**Email** [kcei.marketing@kobelco.com](mailto:kcei.marketing@kobelco.com)

*Toll free number*

**1800 103 6910**

