

KOBELCO

VIBRO HAMMER

SK380XDLC

Boom Length 8.5 m

Arm Length 4 m

Max. Height 16.37 m

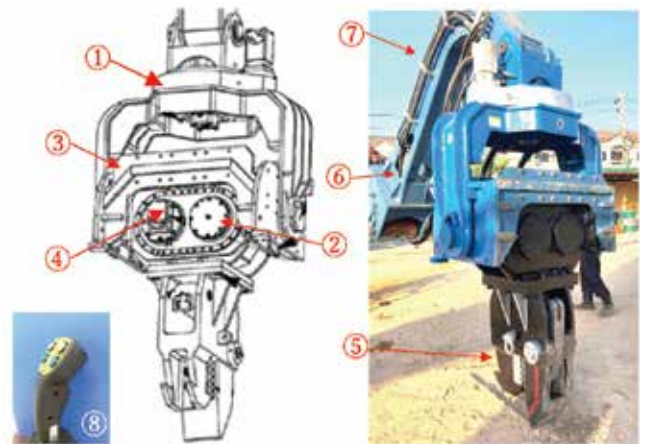
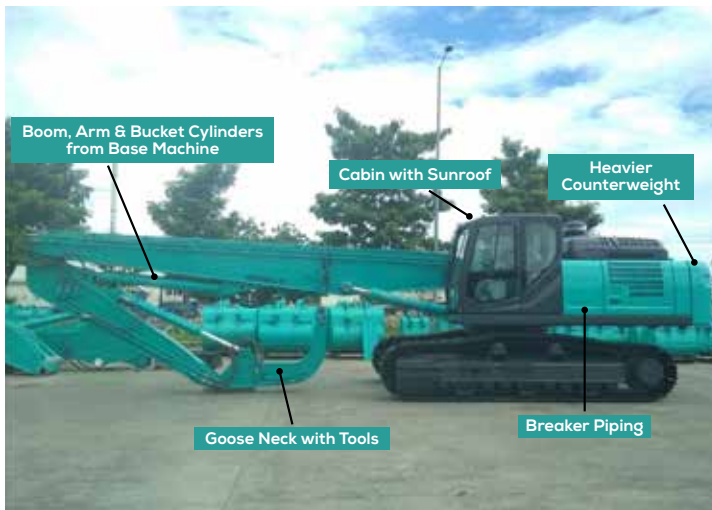
STOMPING STRENGTH

when you
need it the most

SK380XDLC

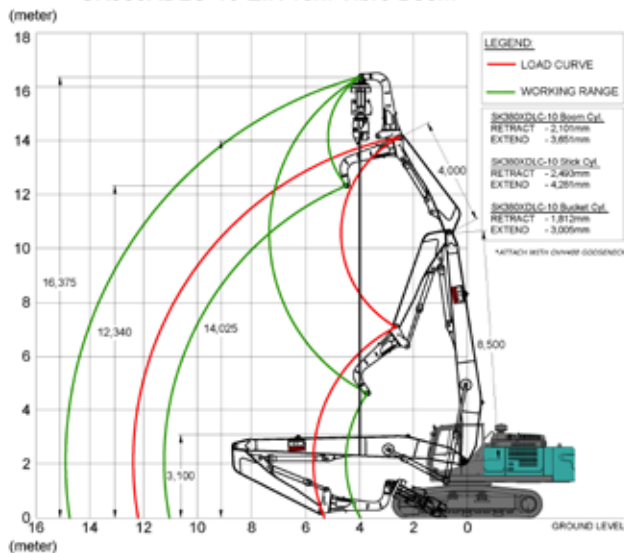


Special Parts for Vibro Attachment



1. Swivel mount
2. Gear box
3. Bracket
4. Hydraulic motor
5. Clamp
6. Hydraulic system
7. Gooseneck
8. Control joystick

SK380XDLC-10 EIK 16m Vibro Boom



SPECIFICATIONS

VIBRO ATTACHMENT FOR SK380XDLC - 10

Specifications (Straight Boom & Straight Arm)	Max. Height : 16.37m
	Boom: 8.5m, Arm: 4.0m
	3 x Extra Piping for Vibro Hammer
	1 x 8.5m Boom with Full Set for Hydraulic Lines
	1 x 4m Arm with Full Set for Hydraulic Lines

VIBRO TOOL		
Model	Unit	OVH400
Speed	rpm	3000
Eccentric force	ton	56.5
	kN	shiyou
Rotation	degree	360
Tilt	type	Free
	degree	90
Relief Pressure	bar	315
Oil Flow	L/min	240
Weight	Main Body	2150
	Gooseneck	890 (A250C)
	Clamp	550 (C19)
	Total	3590
Suitable Excavator	ton	35-45
Dimensions	Height	2586
	Width	1460
	Thickness	737
1 x 2.5m "Goose Neck" for Vibro Hammer		

KOBELCO CONSTRUCTION EQUIPMENT INDIA PVT. LTD.

INDIA HEADQUARTERS H-200, Sector 63, Noida, Uttar Pradesh 201 307

FACTORY 4100, Central Expressway, Sri City, Andhra Pradesh 517 646

Email kcei.marketing@kobelco.com



Toll free number
1800 103 6910