

**KOBELCO**

# **PERFECT ATTACHMENTS.** ENDLESS APPLICATIONS.

*Special Attachment Solutions for Kobelco Excavators*



**KOBELCO CONSTRUCTION EQUIPMENT INDIA PVT. LTD.**

# SPECIAL ATTACHMENT SOLUTIONS FOR YOUR KOBELCO EXCAVATOR

Our most reliable and efficient excavators are also the most versatile. Whatever your application, we have attachment solutions for your Kobelco excavators. Be it infrastructure development, irrigation, tunneling, material handling, mining, demolition or quarrying & crushing, you can choose from a wide range of customised attachments to equip your excavator for various tasks. Explore the numerous attachments available and their applications in the following pages.



INFRASTRUCTURE  
DEVELOPMENT



IRRIGATION



TUNNELING



MATERIAL  
HANDLING



MINING



QUARRYING &  
CRUSHING

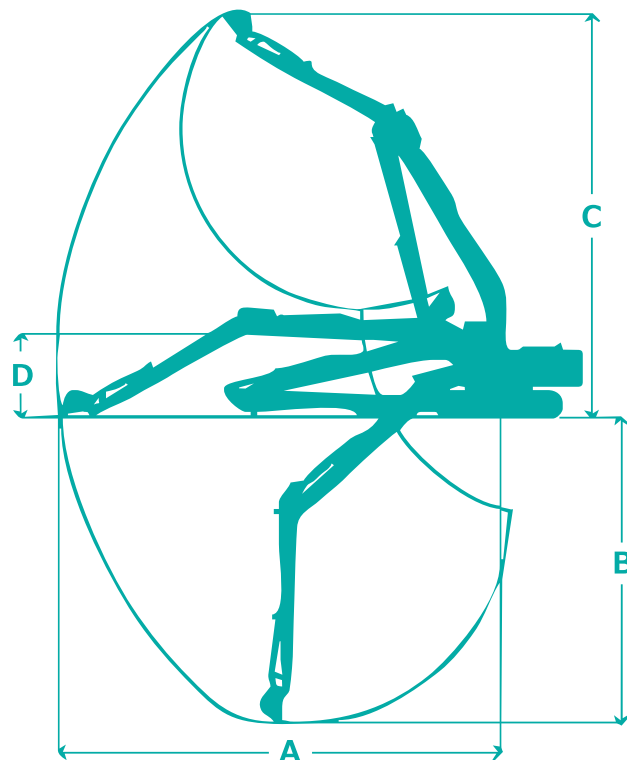


DEMOLITION

# SUPER LONG REACH

## APPLICATIONS

- Ideal for river and sea dredging either on land or barges
- Basement and deep foundation excavation
- Construction of ditches & levees, and pond maintenance
- Drainage Canal Construction and maintenance
- Port-Reclamation work



## SPECIFICATIONS

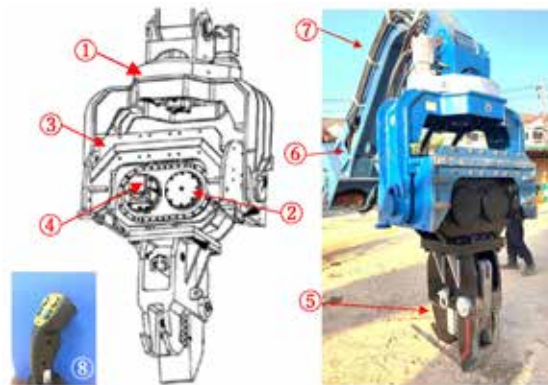
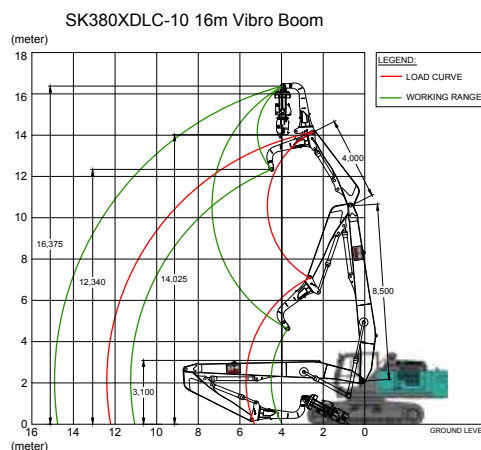
Excavator Model	A Max. Reach		B Max. Depth		C Max. Height		D Boom Height		Approx. Bucket Capacity
	m	ft	m	ft	m	ft	m	ft	cu.m.
SK140	12	39'3"	8.3	27'2"	10.4	34'4"	2.1	6'92"	0.35
SK220	15.82	51'9"	12.01	39'4"	13.9	45'6"	3.12	10'2"	0.45
SK380	18.81	61'7"	14.18	46'5"	15.67	52'4"	3.4	11'1"	0.6
SK520	20.21	66'3"	15.08	49'5"	16.145	52'9"	3.74	12'2"	0.8
SK850	23.05	75'6"	17.1	56'	17.8	58'4"	5.15	17'9"	1.4



# VIBRO BOOM

## APPLICATIONS

Driving in or extracting out of the ground for building marine docks, bridges, buildings, roads, rail, walls and many other types of foundations.



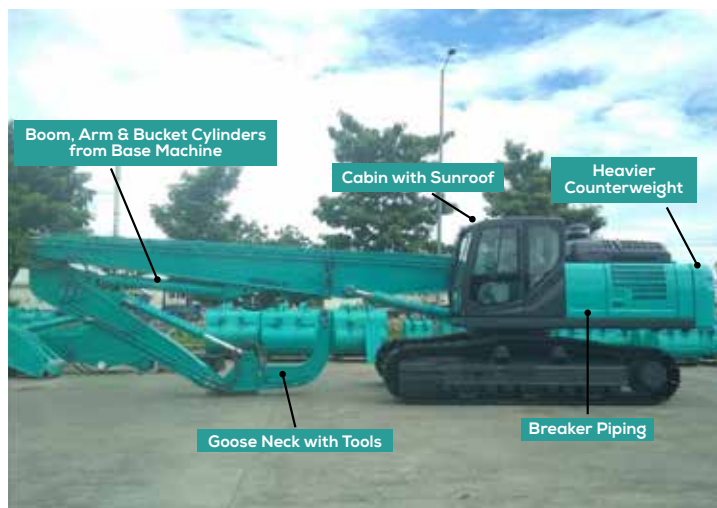
- |                    |                     |
|--------------------|---------------------|
| 1. Swivel mount    | 5. Clamp            |
| 2. Gear box        | 6. Hydraulic system |
| 3. Bracket         | 7. Gooseneck        |
| 4. Hydraulic motor | 8. Control joystick |

## SPECIFICATIONS

### VIBRO ATTACHMENT FOR SK380XDLC - 10

<b>Specifications</b> (Straight Boom & Straight Arm)	Max. Height : 16.37m
	Boom: 8.5m, Arm: 4.0m
	3 x Extra Piping for Vibro Hammer
	1 x 8.5m Boom with Full Set for Hydraulic Lines
	1 x 4m Arm with Full Set for Hydraulic Lines

### Special Parts for Vibro Attachment



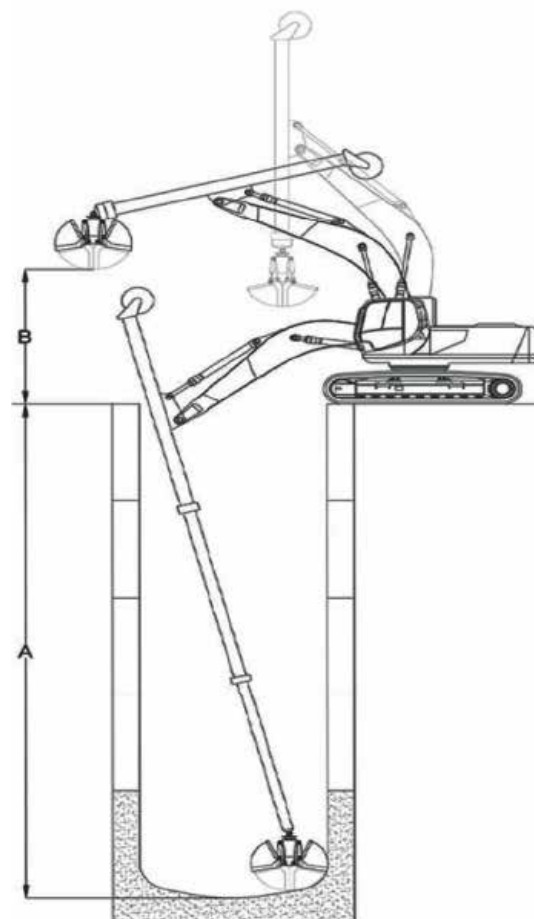
### VIBRO TOOL

Model	Unit	OVH400
Speed	rpm	3000
Eccentric force	ton	57.9
	kN	567.9
Rotation	degree	360
Tilt	type	Free
	degree	90
Relief Pressure	bar	315
Oil Flow	L/min	240
Weight	Main Body	2150
	Gooseneck	890 (A250C)
	Clamp	550 (C19)
	Total	3590
Suitable Excavator	ton	35-45
Dimensions	Height	2586
	Width	1460
	Thickness	737
1 x 2.5m "Goose Neck" for Vibro Hammer		

# TELESCOPIC DIPPER

## APPLICATIONS

- Lifting materials and resources from deep holes and trenches
- Demucking
- Metro construction applications
- Foundation work



## SPECIFICATIONS

TELESCOPIC DIPPER FOR SK220XDLC-10	TELESCOPIC DIPPER FOR SK380XDLC-10
Max. Digging Depth: 21.0m	Max. Digging Depth: 25m / 29.4m
Bucket Capacity: 0.6 cu.m	Bucket Capacity: 1.0 cu.m / 1.3 cu.m
Free Rotating Clamshell Bucket	Free Rotating Clamshell Bucket
Sliding Cabin	Sliding Cabin

Base Excavator Model Tonnes	Total Dig Depth (A) m	Load Over Height (B) m	Max Clamshell Size cu.m
SK220 - 22T	21.0	5.4	0.6
SK380 - 38T	25.0	5.4	1.0
SK380 - 38T	29.4	5.4	1.3

# CLAMSHELL BUCKET

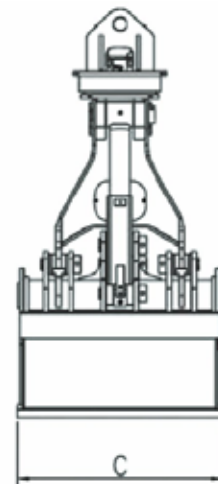
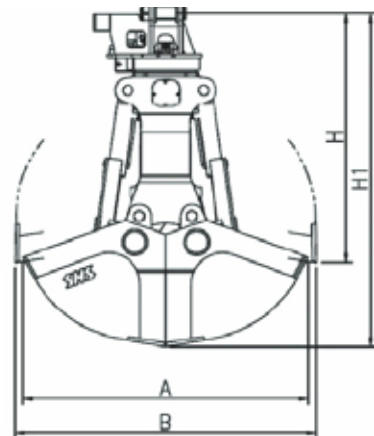
## APPLICATIONS

- Digging pits for ground construction work
- Ideal for digging and loading material in tight and limited spaces
- Material handling, loading and unloading industrial wastes, grains, sands, etc
- Heavy-duty mechanical clamshell is ideal for dredging applications by crane



## FEATURES

- Designed for durability for all material loading needs in field of work towards higher productivity
- Hydraulic Rotation and Free Rotation are available



## SPECIFICATIONS

Model	Capacity	A	B	C	H	H1	Weight
	cu.m	mm	mm	mm	mm	mm	kg
<b>SCB30-11 OOH</b> (SNS - Imported)	1.00	1727	1904	1100	1481	2119	1560
<b>ICS 1010RS</b> (INDUS - Domestic)	1.00	1900	2160	976	1620	2140	1385



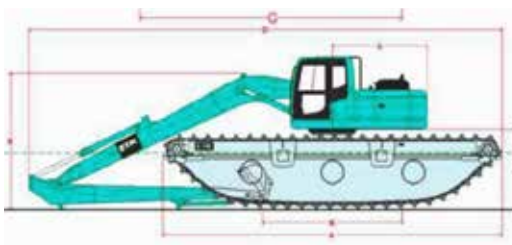
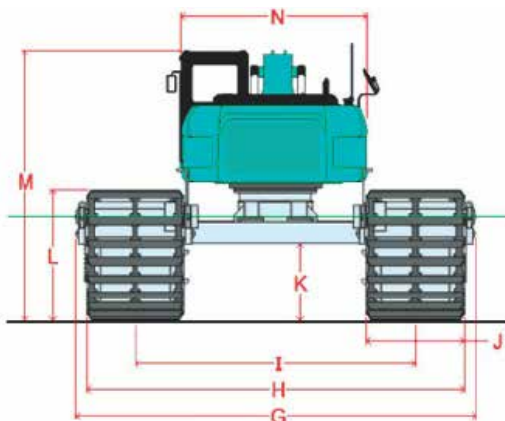
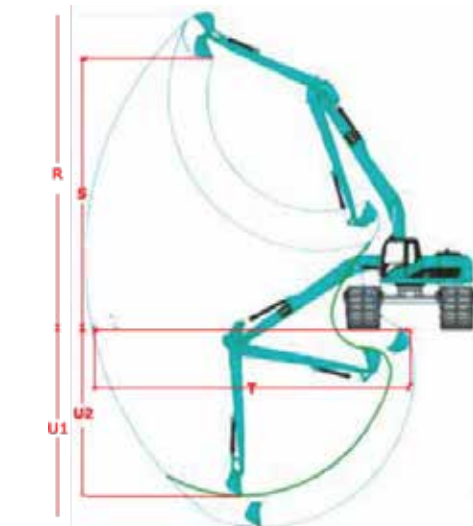
# AMPHIBIOUS EXCAVATOR

## APPLICATIONS

- Maintenance and cleaning of waterways, lakes, shorelines, ponds, etc.
- Deepening of waterways and river deltas.
- Flood protection and flood maintenance works.
- Landscape building and protection.
- Swamp and wetland construction.



## SPECIFICATIONS

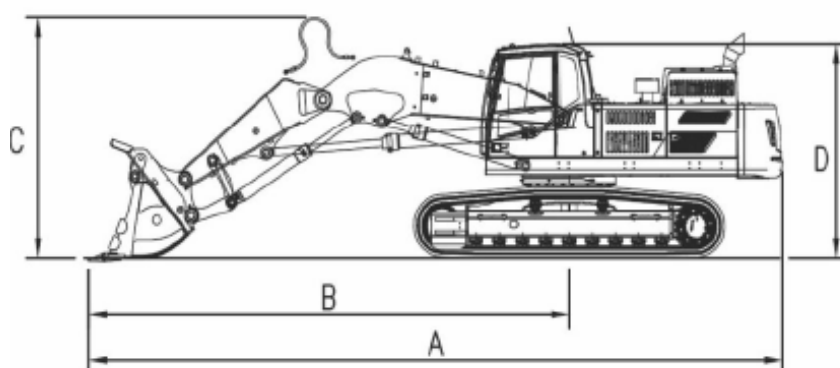
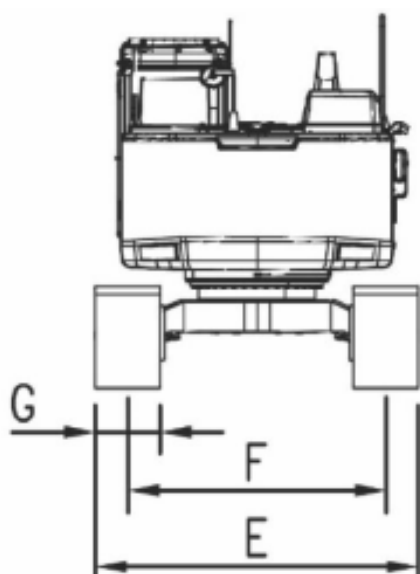


Dim (m)	Description	Amphibious Undercarriage Models		
		SK140 For 12-14 ton class excavator	SK220 For 20-23 ton class excavator	SK380 For 30-38 ton class excavator
A	Max. Track Length	9.30	9.65	11.90
B	Track Length on Ground	4.00	4.15	6.00
C	Rear Upper Structure Length	2.18	2.75	3.40
D	Overall Length	12.30	13.55	16.60
E	Height of Boom	2.95	3.47	4.15
F	Counterweight Clearance	1.90	2.17	2.35
G	Overall Width, Min./Max (Outwardly extendable)	4.22/5.32	4.80/6.28	6.27/7.27
H	Undercarriage Width, Min/Max	3.95/5.05	4.47/5.95	5.97/6.97
I	Track Gauge, Min/Max	2.50/3.60	2.85/4.33	4.02/5.02
J	Track Clear Width	1.45	1.62	1.95
K	Min. Ground Clearance	1.14	1.30	1.13
L	Track Height	1.70	2.03	2.03
M	Overall Cab Height	3.90	4.10	4.25
N	Upper Structure overall Width	2.50	2.75	3.00
R	Max. Cutting Height	11.90	14.00	15.00
S	Max. Loading height	10.00	12.10	13.30
T	Recommended outreach	12.00	14.00	17.00
U1	Max. Digging Depth from Front	8.00	8.80	11.50
U2	Max. Digging Depth from Side	6.60	6.90	9.40
	Bucket Capacity (cu.m)	0.40	0.50	0.90

# FRONT SHOVEL

## APPLICATIONS

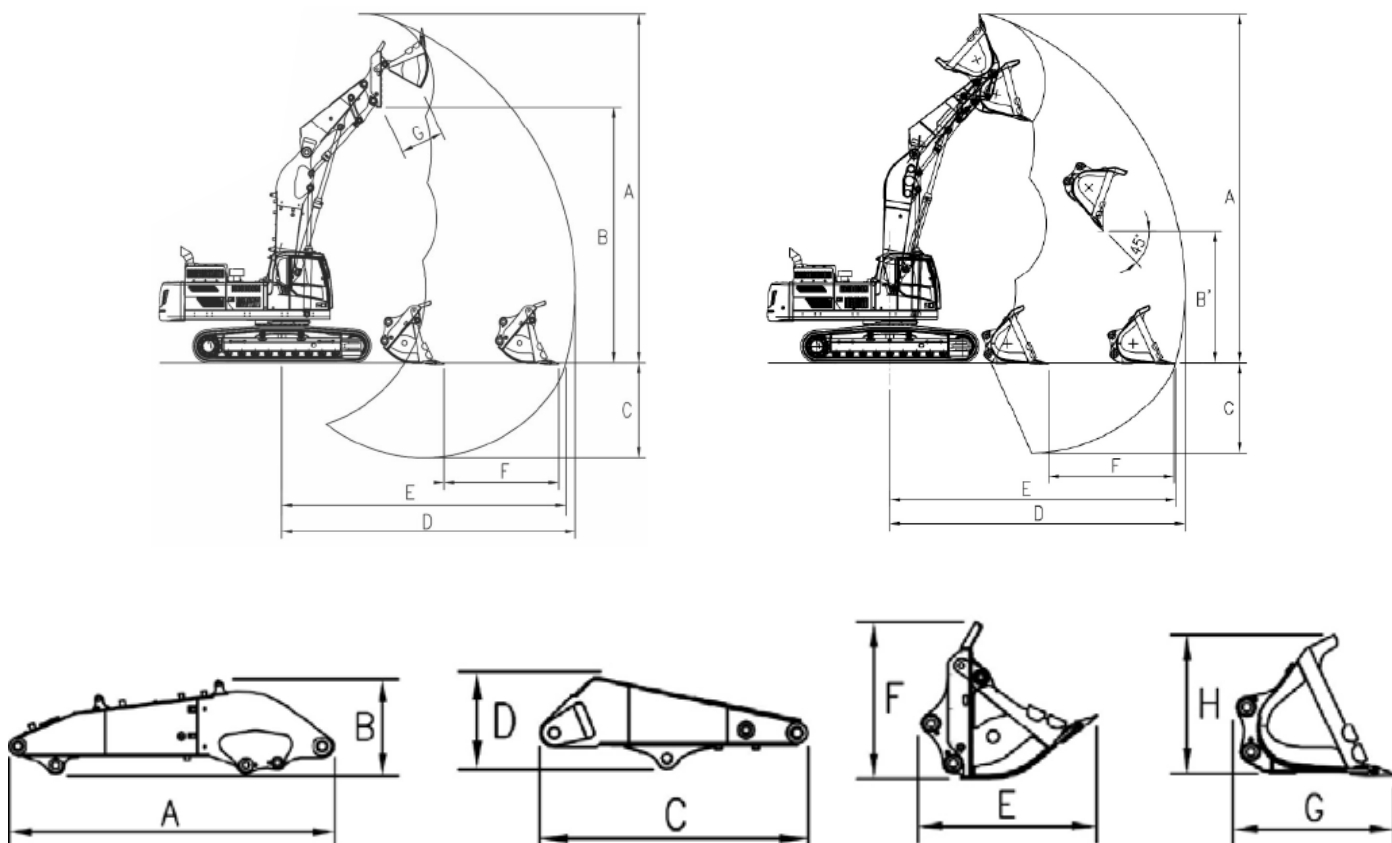
- Tunneling
- Road Construction
- Railways
- Irrigation Canal



## SPECIFICATIONS

	Dimension	Unit	SK380XDLC		SK520XDLC		SK850LC
		mm	BD	TD	BD	TD	BD
<b>A</b>	Max. Digging Height	mm	9,650	10,150	10,300	10,250	11,250
<b>B</b>	Max. Dumping Height	mm	7,400	-	7,200	-	8,050
<b>C</b>	Dumping Height (45°)	mm	-	3,850	-	4,400	-
<b>D</b>	Max. Digging Depth	mm	2,720	2,650	3,650	3,550	4,150
<b>E</b>	Max. Digging Reach	mm	8,500	8,600	8,950	8,900	9,400
<b>F</b>	Max. Digging Reach (Ground)	mm	8,250	8,310	8,650	8,550	9,050
<b>G</b>	Level Crowding Distance	mm	3,300	3,650	3,500	2,850	3,200
<b>H</b>	Max. Bucket Opening Width	mm	1,260	-	1,540	-	1,600





## SPECIFICATIONS WEIGHT & DIMENSIONS OF COMPONENTS

Items		Unit	SK380XDLC		SK520XDLC		SK850LC
			BD	TD	BD	TD	BD
Boom (with Piping)		kg	3,150		3,500		6,050
Arm (with Piping)		kg	2,400		2,650		4,300
Cylinders (Arm + Bucket)		kg	950		1,050		1,500
Additional Counterweight		kg	-		1,500		2,000
Bucket	GP Bucket	kg	2,300	2,000	3,100	2,700	6,500
	HD Bucket	kg	2,400	2,000	3,200	2,800	6,900
	Extra HD Bucket	kg	2,500	2,000	3,500	3,100	7,300

**GP:** General Purpose

**HD:** Heavy Duty

**XHD:** Extra Heavy Duty

		Unit	SK380XDLC		SK520XDLC		SK850LC	
A	B	mm	4,300	1,400	4,700	1,700	4,900	1,850
Width			1,200		980		1,400	
C	D	mm	2,900	2,000	3,100	1,400	3,400	1,450
Width			800		650		900	
E	F	mm	2,200	2,000	2,450	2,400	2,550	2,450
G	H	mm	2,000	1,750	2,200	2,100		

# ROCK BREAKER

## APPLICATIONS

Best performance at various job sites of quarry, mining, general construction and demolition.



## FEATURES

- High Breaking Force
- Auto Stop & Easy Start System
- Anti-abrasion Bracket
- Frequent Gas Charging not required
- Lower Running Cost
- Auto-lubrication System (option)



## SPECIFICATIONS

	Unit	OKADA 400	OKADA1600HD	TOP2800J	TOP3800J
Working Pressure	MPa	09-12	14-19	15-18	16-18
Oil Flow Consumption	L/min	23-70	65-100	110-135	160-190
Frequency	b.p.m.	L-600	L-400	L-360-430	L-370
		L-1500	L-900	H-500-600	L-530
Operating Weight	kg	187	1083	1800	2580
Overall Length	mm	1450	2333	2726	3155
Working Steel Dia.	mm	57	105	135	150
Carrier Machine Weight Range	ton	1.5-4	10-15	18-28	24-36
Carrier Output Flow Range	L/min	30-70	80-140	140-210	220-280

# POWERLATCH COUPLER

## APPLICATIONS

The Miller PowerLatch Coupler is a proven design manufactured by the world's leading authority on pin grabber quick coupler technology.

## FEATURES

### Quick Changeover

Saves labour, time, and money

### Single Steel Casting

Light, yet strong

### Twin-locking System

High operational safety

### Extended life of Bucket Pin & Bushings

Reduces expenses

### Multiple Attachment Options

Increases versatility



## SPECIFICATIONS

Model	GTS 1B	R4	R6	R8
Excavator Weight	3.0-3.5T	10-15T	22T	35-38T
Pin Diameter (mm)	40	65	80	90
Pick-up Range (mm)	172-200	355-420 (65mm)	430-520	482-602 (90mm)
Weight	30kg	180kg	310kg	562kg
OEM Capability	Kobelco SK30/SK35SR	Kobelco SK135/SK140	Kobelco SK200/SK210/ SK220	Kobelco SK300/SK330/ SK350/SK380



# DEMOLITION MACHINE

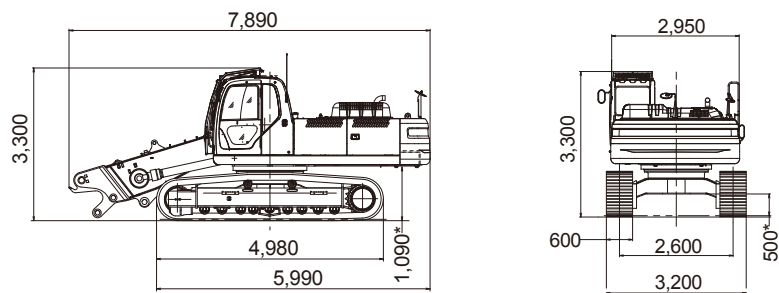
## MULTI-FUNCTION VERSATILITY. SINGLE-FUNCTION PERFORMANCE.

Although single-function machines are highly effective for specific tasks, they run the risk of sitting idle for long periods of time at busy work sites. Kobelco provides an effective and highly-productive solution to this problem.

The Kobelco SK350D LC is a revolutionary demolition machine for entire buildings, from rooftops to foundations. The SK350DLC can quickly demolish entire buildings, from rooftops to foundations without the need of secondary machines.

The main boom offers the flexibility of using a variety of attachments such as an ultra-long attachment and a separate boom, the SK350DLC offers unprecedented versatility while delivering the speed and effectiveness of a single-function machine.

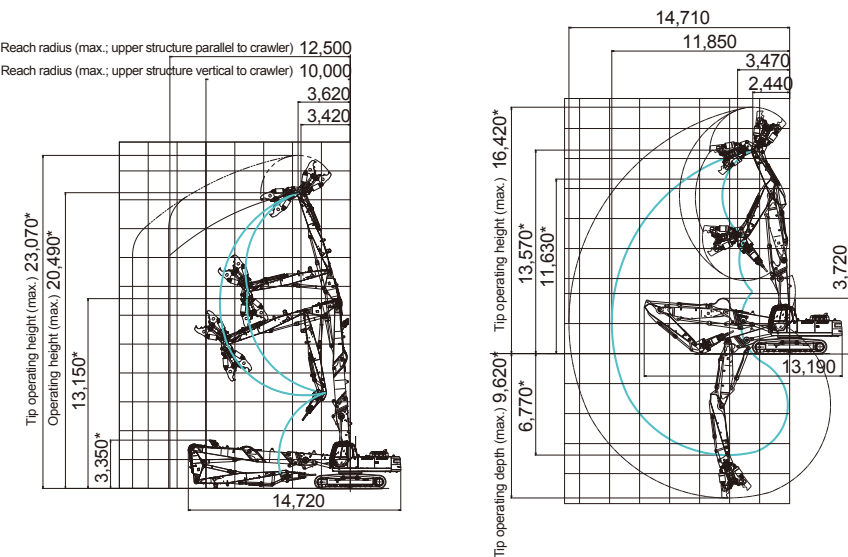
## DIMENSIONS (Unit mm) \*Excluding the height of the shoe lug



## WORKING RANGE (Unit mm) \*Excluding the height of the shoe lug

### ULTRA-LONG ATTACHMENT

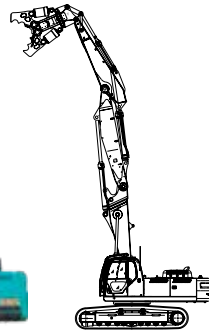
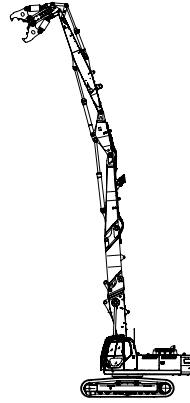
Diagram shows KR1100TPR attached



SK350DLC with ultra-long attachment KR1100TPR  
(Water sprinkler optional)



SK350DLC with separate boom KR1350TPR-40  
(Water sprinkler optional)



### ULTRA-LONG ATTACHMENT

Strong, three-piece attachment for demolishing structures as high as 20 m. For added versatility, the attachment can be shortened by removing the insert boom.

### MAXIMUM WORKING HEIGHT

Blade tip: 23.07 m  
Arm top pin: 20.49 m

### SEPARATE BOOM

Sturdy boom for a variety of operations, including demolishing mid-rise buildings all the way down to their foundations. A large crusher can be attached for powerful and speedy demolition.

## SPECIFICATIONS

Model Name		SK350DLC-8	
Operating Weight (Main Unit + Main Boom) kg		32,700	
Attachment		Ultra-long Attachment	Separate Boom
Attachment Weight (including Crusher) kg		6,800	5,500
Front Attachment		KR1100TPR	KR1350TPR-40
Operating Weight kg		42,100	42,000
Max. Crusher Weight kg		2,600	4,000
Crawler Width mm		3,200	
Swing Speed min <sup>-1</sup>		5.5	10
Travel Speed Km/hr		5.6 / 3.3	
Gradeability % (deg)		70 (35)	
Ground Pressure kPal (kgf/cm <sup>2</sup> )		79 (0.80)	78 (0.80)
Engine	Model	HINO JO8E - TM	
	Rated output kW(PS)/min <sup>-1</sup>	197 (265) / 2,100	
Fuel Tank l		58D	
Hydraulic Pump Set Pressure MPa (kgf/cm <sup>2</sup> )		31.4 (320)	
Hydraulic Pressure l		System 377 / Tank level 280	

The machinery complies of international System of Units (SI).  
Operating weight includes crusher (auto rotating NIBBLER) or bucket.

# PRIMARY CRUSHER

---

## APPLICATIONS

### Steel Structures

Cutting Steel Profiles, Girders, Beams and Reinforcements

### Reinforced Concrete

Primary & Secondary Demolition

## FEATURES

- Made of special casting alloy that is lighter and more durable
- Twin cylinders with individual valve installed
- Wedge arm produces more crushing force
- 360-Degree workable directions



# PULVERISER

---

## APPLICATIONS

### Steel Structures

Cutting Steel Profiles, Girders, Beams and Reinforcements

### Reinforced Concrete

Primary & Secondary Demolition

### Non-Reinforced Concrete

Primary & Secondary Demolition, Wall Elements

### Light Demolition

Light Structure, Masonry, Beams, Indoor Renovation

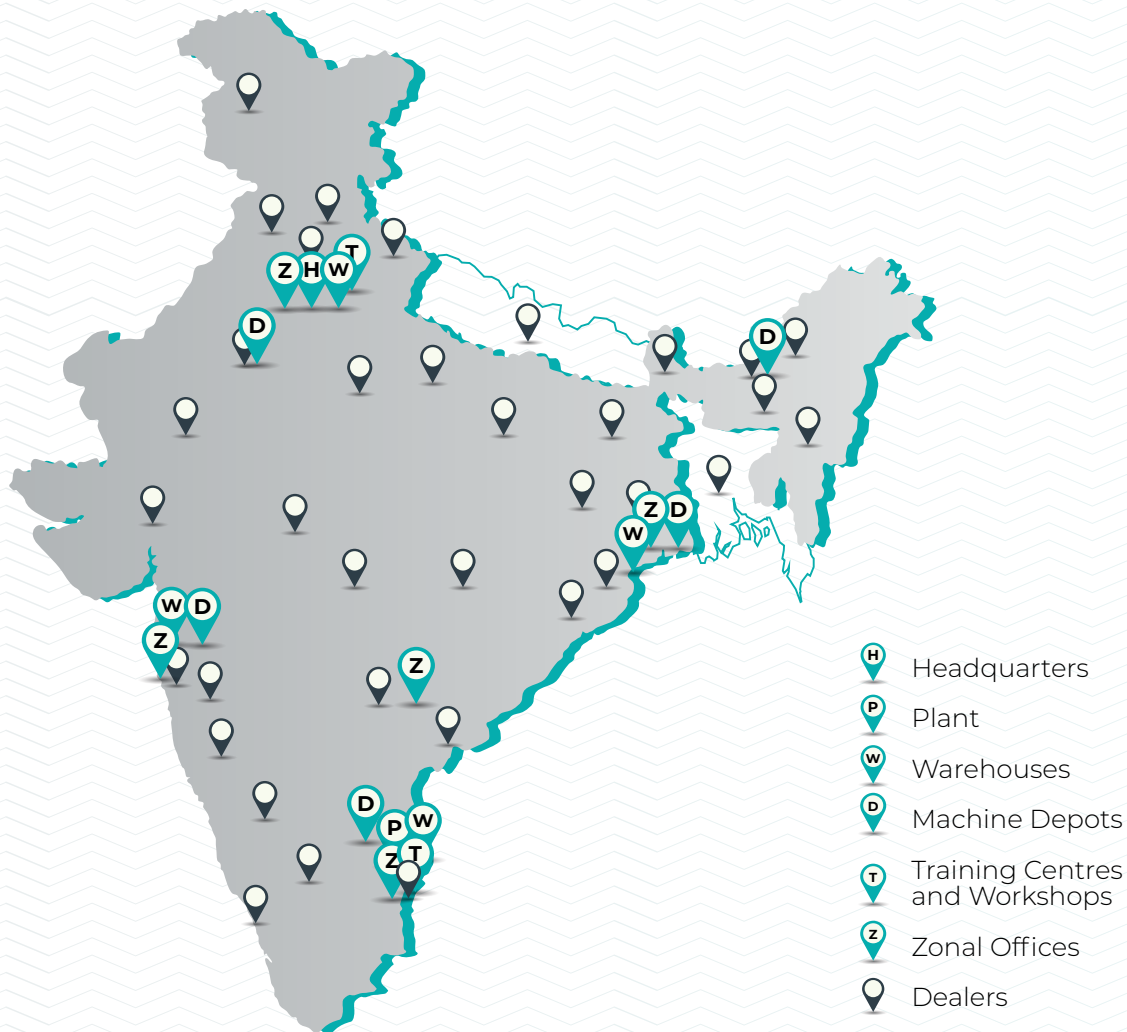
## FEATURES

- Workable in narrow building spaces or noise-regulated environment
- Increased productivity due to higher speed-up value
- Moving arm tooth replaceable as standard
- Welding-Tooth type and Bolting-Tooth type available





# WIDE REACH



**35 DEALERS**

India, Bangladesh & Nepal



**04**

Warehouses



**02**

Training Centers



**05**

Zonal Offices



**05**

Depots



*Accela* | **KOBELCO**

**KOBELCO**  
R<sup>W</sup>LSE

24/7 Service Call Centre

Portal-based Knowledge System

Remote Sampark Program

# KOBELCO CONSTRUCTION EQUIPMENT INDIA PVT. LTD.

**INDIA HEADQUARTERS** H-200, Sector 63, Noida, Uttar Pradesh 201 307

**FACTORY** 4100, Central Expressway, Sri City, Andhra Pradesh 517 646

---

**Phone** 0120 4079 930 **Email** [kcei.marketing@kobelco.com](mailto:kcei.marketing@kobelco.com)



[kobelco-in.com](http://kobelco-in.com)



[KobelcoIndiaOfficial](#)



[Kobelco India](#)



[1800 103 6910](tel:18001036910)

---

*Note: This catalog may contain attachments and optional equipment that are not available in your area. And it may contain photo graphs of machines with specifications that differ from those of machines sold in your areas. Please consult your nearest KOBELCO distributor for those items you require. Due to our policy of continuous product improvements all designs and specifications are subject to change without advance notice. Copyright by KOBELCO CONSTRUCTION MACHINERY CO., LTD. No part of this catalog may be reproduced in any manner without notice.*