



KOBELCO

COMPANY PROFILE

KOBELCO CONSTRUCTION EQUIPMENT INDIA PVT. LTD.





Kobelco Construction Equipment India offers unique solutions involving earth movers and cranes for construction sites. These solutions make creative use of technology, are environment-friendly, and are customized for each jobsite condition.

PROGRESS TOGETHER

with focus on customer aspirations
and growing needs

Kobelco has had over 90 years of history with construction equipment Industry. In 1930, we produced the first construction machine in Japan, the 50K electric mining shovel. Since then, we have created products and technology like no other in the industry. I wish to thank our valued customers, business partners and all the stake holders, who have been a great support throughout for Kobelco branded products, with which we have earned an excellent reputation for performance, quality, reliability and productivity around the world.

Here in India also, Kobelco is highly regarded for its high-quality and fuel-efficient products and customer friendly service.

Since KCEI formation in India in 2007, we have been providing products and services with “*Kobelco global standard quality*” for India as well as other countries. The most important mission for us is raising our customers’ satisfaction to higher levels. We will achieve this with continuous innovation and constant improvement on our products and services. It is my commitment to raise Kobelco Brand to a higher stage in India.

Kobelco Group has also initiated measures to develop better working styles by creating the right environment so that all employees can have a challenging yet rewarding jobs, in which they perform meaningful tasks in a collaborative manner.

Kobelco has adopted “*Low fuel consumption*” and “*Low noise*” as guiding principles in our push for environmental care. We reiterate our commitment to produce products and provide services to our customers with a strict adherence to compliances, serving as the major principle for all our actions and philosophy.

Year 2022 is KCEI’s 15th anniversary. We have also recently reformed our organization’s Sales & Marketing Division into Infra Business Div. and Mining Business Div. This aims to provide professional services in a highly specialized manner in each of this industry, spear heading as “*Your Solution Provider*”. This is our commitment to keep the focus on our customer’s aspirations & growing needs. With our customers, business partners and stake holders in India, we shall continue to grow in the next 5 to 10 years and beyond. Please keep expecting our continued Solution Providing Approach in different forms & facets, as we progress together.

Looking forward to a fruitful and Win-Win association with you all.

TAKEMICHI HIRAKAWA

Managing Director & CEO
Kobelco Construction Equipment India Pvt. Ltd.

“The most important mission for us is raising our customers’ satisfaction to higher levels. We will achieve this with continuous innovation and constant improvement on our products and services”



Kobelco has adopted “Low fuel consumption” and “Low noise” as guiding principles in our push for environmental care. We reiterate our commitment to produce products and provide services to our customers with a strict adherence to compliances, serving as the major principle for all our actions and philosophy.

KOBELCO IN INDIA

Kobelco Construction Equipment India Pvt. Ltd. (KCEI) was established in 2006 and is a subsidiary of Kobelco Construction Machinery, Japan.

Producing excavators and cranes in Sri City, Andhra Pradesh, KCEI is also fully equipped to meet customer expectations in terms of service and parts with over a 140 outlets in India, Nepal, and Bangladesh.

2006



Kobelco Construction Equipment India Pvt. Ltd. established

2007



Began operations in India with Head Office in Noida

2010



First machine rolled out; Kobelco Cranes India Pvt. Ltd. formed

2011



Excavator factory inaugurated at Sri City; SK210 model launched; 100 machines completed

2012



500th and 1000th machine completed; Crane factory inaugurated at Sri City

2013

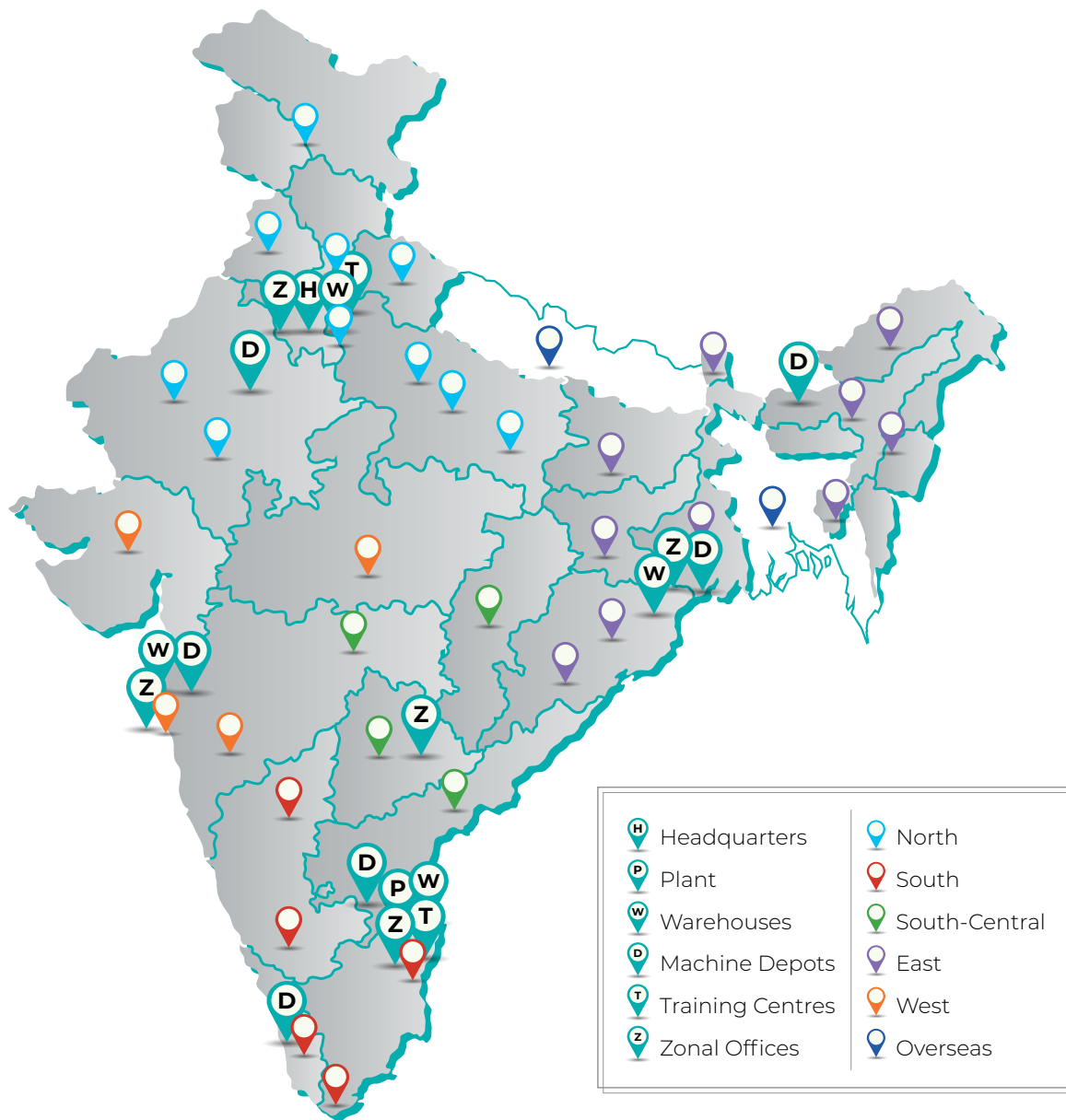


SK 380 model launched; Dealer meeting held in Bangkok, Thailand

2014



HD machine introduced



2015



28 dealer partners and 130 dealer outlets established; SK 140 introduced



SK210HDL receives award for the most eco-friendly machine

2017



Production plan increased to 2000 units in India by 2018; Generation 10 series launched; Kobelco cranes and excavators merged

2018



Started production of SK520 in India

2019



10,000+ excavators produced in India; Sri City KCEI factory expanded

2020



SK220 Infra Launched

2021



SK140 / SK145XDL Launched

The background of the image is a blurred industrial scene, likely a factory floor. On the right side, there is a long, straight line of industrial machinery, possibly a conveyor belt or a series of rollers, receding into the distance. The lighting is bright, with some areas appearing overexposed. A semi-transparent teal rectangular overlay covers the left portion of the image, serving as a background for the text.

MADE IN INDIA

with Japanese
technology
and quality
processes

KOBELCO symbolizes many things

In India, we continue to consolidate our strengths in providing highly-durable and productive machines, as well as in providing best-in-the-industry field support. We are increasing the range of our offerings as well as several types of special attachments to meet the growing needs of our valued customers. There has been a healthy increase in the demand for KOBELCO machines and we are in the process of augmenting our manufacturing capacities to keep pace with the overall market growth.

SAFETY

In our India factory, as it is in the rest of the world, our first priority is for safety. Where men and machines work together, KCEI makes absolutely no compromises on the aspect of safety.

CHALLENGE

We are constantly challenging ourselves to go beyond the norms of conventional construction machinery. We go all out to overcome all obstacles in the way of achieving utmost satisfaction for our customers.

HARMONY

Our construction machinery is in harmony with the landscape and the people. We lay great emphasis on our machines being environment-friendly.



LEADING EDGE

in product innovation
and technology

At Kobelco, we aim to establish ourselves as world leaders in the construction machinery segment. Kobelco Construction Equipment India aims to continuously keep raising the bar when it comes to setting quality standards for construction machinery such as excavators and cranes. We always overcome challenges through innovation and technology. Quality, safety, being environment-friendly, and providing customer satisfaction are our main focus areas. And that is why people who know go with Kobelco.

Parts warehouse



All required parts are received, stored and sorted for assembly lines.

Steel fabrication



Frames and other parts are welded and machined, and are transported by conveyor to the painting process.

WAREHOUSES

The quality of parts and the service support directly impacts machine uptime and productivity. Kobelco is keenly aware of this critical need and is committed to providing strong support to its customers even in remote locations. Our warehouses and dealer outlets in over 140 places in India and Nepal, help us provide our customers with 24x7 support in terms of parts and services.



TRAINING

Training the workforce is very important to have an empowered and motivated workforce, which in turn results in high customer satisfaction. KCEI has state-of-the-art training facilities for both technology and processes. The company provides both classroom and practical training and helps create the employees of the future.



Lean & Clean Process

Painting



All painting is done on lines where shot-blasting, undercoat application, top coat application, and drying are carried out.

Lower body assembly



Each component and parts of the lower body assembly such as under carriage, track assembly, lower frame and other attachments are assembled.

Sub assembly



Engines, pumps and other systems are assembled.

Upper body assembly



Each component and parts for body assembly such as cabin structure, sub assembly systems and other attachments are assembled.

Docking



Lower and upper structures are docked and swing bearings are tightened using a special device.

Main assembly



Counterweights and cab are installed, and a hydraulic excavator takes its final shape.

Rigging and testing



Assembly is completed when final inspections including oil leakage inspections and performance tests are performed, and stickers are applied.

SALIENT FEATURES



Producing High Quality Machines



Lean and Clean Processes



Safety First Approach



Prompt Delivery



Best 24x7 Support



State-of-the-art Training

PEOPLE

Kobelco has also initiated measures to develop better working styles within the Group by creating the right environment for all employees to work in challenging yet rewarding jobs in which they perform meaningful tasks in a collaborative manner.



TECHNOLOGY

We are constantly challenging ourselves to come up with innovative new technologies. Though we have a strong Research and Development wing within the organization, our systems help us to cultivate technology and knowhow from across the globe. Open innovation is the key to widely enhancing knowledge, technology, and people.



QUALITY

Quality in our products, in our processes and in our service is the foundation on which the company is built. Our aim is the ultimate satisfaction of the customer, which is possible only with ultimate quality across customer touchpoints. That is why Quality First is our motto in all our factories across the world.









APPLICATIONS

Excavator Applications

- Mining of coal, marble, limestone, granite, blue metal, and sand
- Building irrigation canals
- Building urban infrastructure like roads and bridges
- Agricultural and forest uses
- Port activities

Crane Applications

- Building urban infrastructure like roads, bridges, and stadiums
- Construction of Industrial plants, hydro projects, refineries
- Shipbuilding and offshore constructions
- Erection of windmills
- Geo technical works like grabbing and piling

EXCAVATORS

A new era of toughness

KCEI excavators are powerful, economical, and efficient. The higher uptime of these machines ensures higher productivity and quicker and better returns on investment.



SK30SR SK35SR



This excavator is specially built for the Indian market. It is a small yet tough machine. It has a four-cycle three-cylinder engine that is a direct injection, water-cooled, diesel engine.

SK220 SK220XD_{LC}



The SK220 is flexible enough to meet the demands of various worksites. It has a tier-3 compliant diesel engine that is direct injection, water-cooled, four-cycle and has a turbocharger and intercooler.

SK520XD_{LC}



The SK520 is a direct injection, water-cooled, four-cycle, six-cylinder diesel engine with a turbocharger and an intercooler.

SK140 SK145XD_{LC}



The SK140 has a direct injection, water-cooled, four-cycle diesel engine, and has a turbocharger and intercooler.

SK380XD_{LC}



The SK380XD_{LC} engine is a tier-3 compliant diesel engine and is a direct injection, water-cooled, four-cycle, six-cylinder engine that has a turbocharger and an intercooler.

SK850_{LC}



The SK850_{LC} has a direct injection, water-cooled, four-cycle, diesel engine, with an electrically controlled common rail system, turbocharger and intercooler.

CRANES

Flexible enough to meet the demand of worksites

KCEI cranes are flexible and can meet the demands of different types of worksites. They are known for their high utility and safety and have been created keeping in mind the users' standpoint.





CKL1000i

Has a boom length of 61 m and a lifting capacity of 100 t x 3 m



CKL1350i

Has a boom length of 76.2 m and a lifting capacity of 150 t x 4.4 m



CKL2600i

Has a boom length of 91.4 m and a lifting capacity of 260 t x 4.6 m

GENUINE PARTS

The quality of parts and service support is directly related to the machine uptime, productivity, and reliability. Kobelco has a strong focus on these critical areas and is fully committed to providing the best support to customers, even in remote locations, through their large network of Dealers' branches and outlets. This is reflected in the high percentage of repeat orders and good references.

The reliability and performance of a new machine are factors of the quality of production as well as of the selected components. As such, the equipment is able to deliver its best performance in its initial hours of operation. Thereafter, as and when some parts require replacement, it is of utmost importance that the replacement parts are of the same quality as the parts being replaced so that the machine performance level is maintained. "Genuine Parts" serve this crucial function and help in maintaining the machine efficiency at par with the original. Customers are often approached with alternate parts/ 'will-fit' parts which may appear similar or may have matching dimensions but may not deliver the same level of performance and reliability. It may also trigger the failure of some related parts or assemblies, causing avoidable breakdowns and consequent loss of productive machine hours.



GEOSCAN

GEOSCAN is the remote monitoring system for Geospec series excavators. When a hydraulic excavator is fitted with this system, data on the machine's operation, such as operating hours, location, fuel consumption, and maintenance status can be obtained remotely.

AFTER SALES SERVICE

The key to ensuring satisfactory performance of the machines

MAINTENANCE PACKAGE

Timely machine maintenance using genuine filters and oils, carried out by trained personnel, is most essential for the proper health, productivity, and reliability of any Construction Equipment. This helps in minimizing breakdowns/ idle time and also ensures good Resale Value. In the long run, good maintenance practices ensure lower operating costs.



WORKSHOP

Anticipating the need for quick and reliable overhaul of major components like the Engine, Hydraulic Pump, Swing & Travel devices, Motors, etc., Kobelco had established a Component Repair Workshop at Noida, which has been rendering such repair services. Over a period of time, requisite competence and infrastructure is being created at various Dealerships to provide such support services at a nearby location. All repaired components are covered by a limited Repair Warranty for workmanship.

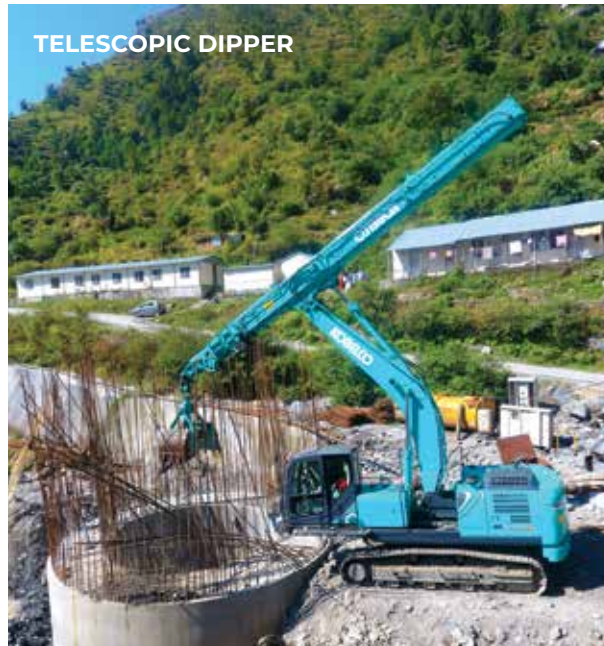
TRAINED TECHNICIANS

Kobelco Service Mechanics and Technicians are trained under a structured training program with a suitable training syllabus that includes e-learning through the Training portal. The training is a mix of theoretical content and practical work on the machine & their components. It has basic, intermediate, and advanced levels with qualifying tests. Refresher courses are also conducted from time to time.



ATTACHMENTS

Attachments for demolishing, long reach, deep digging, mining and construction add flexibility to the excavators and extend their applications



SOCIAL RESPONSIBILITY

The policy outlines the company's responsibility as a corporate citizen for contributing towards sustainable development

Our CSR Policy is directed towards supporting disaster response, encouraging skill development, promoting education specially among children and women, providing healthcare facilities and supporting rural development.

At KCEI, we have been undertaking CSR activities keeping in mind the place where we are conducting business.



Disaster Response

Post-flood restoration activities in Kerala



Rural Development

Mini Excavator donation in Nepal for supporting rural development



Healthcare

Blood donation camps to benefit the needy



Education

Children's education initiatives in and around Sri City



Skill Development

Accreditation from Japan's Ministry of Economy, Trade and Industry (METI), for training 30,000 Indian youth in manufacturing soft skills



KOBELCO INDIA ACHIEVEMENTS

Excavator clocking
60,000hrs
and still going strong

12,000+
machines
Made in India

350+
cranes sold in India,
Bangladesh and Africa

LOCAL SUBSIDIARIES

- A** Kobelco Cranes (Shanghai) Co., Ltd.
- B** Chengdu Kobelco Construction Machinery Group Co., Ltd.
Chengdu Kobelco Construction Machinery Financial Leasing Ltd.
- C** Kobelco Construction Machinery Vietnam Co., Ltd.
- E** Kobelco Construction Machinery Malaysia Sdn. Bhd.
- F** Kobelco International (S) Co., Pte. Ltd.
Kobelco Cranes South East Asia Pte. Ltd. Ricon Private Ltd.
- G** Pt. Daya Kobelco Construction Machinery Indonesia
- H** Kobelco Construction Machinery Australia Pty. Ltd.
- I** Kobelco Construction Equipment India Pvt. Ltd.
- K** Kobelco Construction Machinery Middle East & Africa FZCO.
- L** Kobelco Construction Machinery Europe B.V.
- M** Kobelco Cranes Europe Ltd.
- N** Kobelco Construction Machinery U.S.A. Inc.
Kobelco Cranes North America Inc.

OVERSEAS PRODUCTION BASES

- A** Hangzhou Kobelco Construction Machinery Co., Ltd.
Kobelco Precision Machinery Hangzhou Co., Ltd.
- B** Chengdu Kobelco Construction Machinery Co., Ltd.
- D** Thai Kobelco Construction Machinery Ltd.
- J** FACTORY: Kobelco Construction Equipment India Pvt. Ltd.
- O** FACTORY: Kobelco Construction Machinery U.S.A. Inc.



Scan this
QR code
to watch the
Kobelco India
factory video

KOBELCO CONSTRUCTION EQUIPMENT INDIA PVT. LTD.

INDIA HEADQUARTERS H-200, Sector 63, Noida, Uttar Pradesh 201 307

FACTORY 4100, Central Expressway, Sri City, Andhra Pradesh 517 646

Email kcei.marketing@kobelco.com



kobelco-in.com



[KobelcoIndiaOfficial](https://www.facebook.com/KobelcoIndiaOfficial)



[KobelcoIndiaOfficial](https://www.instagram.com/KobelcoIndiaOfficial)



[KobelcoIndiaOfficial](https://www.youtube.com/KobelcoIndiaOfficial)



Toll free number

1800 103 6910